



# VALLEY VISIONING



# ASSOCIATION OF UTAH COUNTY CHAMBERS



**Envision  
Utah**





CENTRAL UTAH WATER  
CONSERVANCY DISTRICT



NU SKIN.  
DISCOVER THE BEST YOU™

State of Utah  
School and institutional  
Trust Lands Administration



WOODBURY  
CORPORATION



Event Sponsors



ROCKY MOUNTAIN  
UNIVERSITY *of*  
HEALTH PROFESSIONS





Co-Chairs



Cameron Martin



Val Hale



# ASSOCIATION OF UTAH COUNTY CHAMBERS



Josh Walker  
American Fork



Laurie Bailey  
Eagle Mountain



Mark Welcker  
Point of the Mountain



Andra Cefalo  
Payson Santaquin



Eric Jensen  
Pleasant Grove Lindon



Heather Youd  
Spanish Fork Salem



Shirleen Jordan  
Springville Mapleton



Rona Rahlf  
Utah Valley

# Valley Visioning Steering Committee

- JOSH WALKER, *AMERICAN FORK CHAMBER*
- HOWARD HOCHHAUSER, *ANCESTRY*
- JOHN LEWIS, *BRIGHAM YOUNG UNIVERSITY*
- MAYOR BRUNST, *CITY OF OREM*
- JOHN CURTIS, *CONGRESSMAN*
- DALE SEVY, *DOMINION ENERGY*
- KIRK JOWERS, *DOTERRA*
- ABRAHAM HERNANDEZ, *CENTRO HISPANO*
- MARK WELCKER, *LEHI AREA CHAMBER*
- ANDRA CEFALO, *PAYSON-SANTAQUIN CHAMBER*
- JOSH WALKER, *PLEASANT GROVE-LINDON CHAMBER*
- HEATHER YOUND, *SPANISH FORK AND SALEM CHAMBER*
- RONA RAHLF, *UTAH VALLEY CHAMBER OF COMMERCE*
- SHANNON CLEGG, *INTERMOUNTAIN HEALTHCARE*
- TERRY GRANT, *KEYBANK*
- BILL COMEAU, *ROCKY MOUNTAIN POWER*
- JEREMY HAFEN, *UTAH VALLEY CHAMBER/SUNROC*
- RANDY WOODBURY, *WOODBURY CORP*
- JEROLD WAIT, *ZIONS BANK*
- FRASER BULLOCK, *SORENSEN CAPITAL*
- AARON SKONNARD, *PLURALSIGHT*
- BILL HULTERSTROM, *UNITED WAY*
- MAYOR JOHNSON, *CITY OF LEHI*
- MAYOR KAUFUSI, *CITY OF PROVO*
- MAYOR LEIFSON, *CITY OF SPANISH FORK*
- MAYOR MILLER, *CITY OF SARATOGA SPRINGS*
- TANNER AINGE, *UTAH COUNTY COMMISSION*
- JESSICA GILMORE, *UTAH VALLEY UNIVERSITY*
- SHAWN SEAGER, *MOUNTAINLAND ASSOCIATION OF GOVERNMENTS*
- DAVID URE, *SCHOOL AND INSTITUTIONAL TRUST LANDS ADMINISTRATION*
- WARREN PETERSON, *THE CHURCH OF JESUS CHRIST OF LATTER-DAY SAINTS*
- JAMES THAYER, *CLARK CAPITAL*
- GAVIN CHRISTENSEN, *KICKSTART SEED FUND*
- BRANDON FUGAL, *COLLIERS INTERNATIONAL*
- MARY DELAMARE-SCHAEFFER, *UTAH TRANSIT AUTHORITY*
- MAYOR TOM WESTMORELAND, *CITY OF EAGLE MOUNTAIN*

# Phase 1 Overview

- As of April 3rd, 2,723 people have taken the online survey
- 12 public workshops were held across the valley where over 400 people were engaged



# Findings Overview

Utah Valley is experiencing high-tech industry and population growth. Long-time residents want to secure their semi-rural lifestyle and communities for themselves and future generations. A group of younger Utahns are hopeful about growth and exhibit shifting preferences for Utah County.

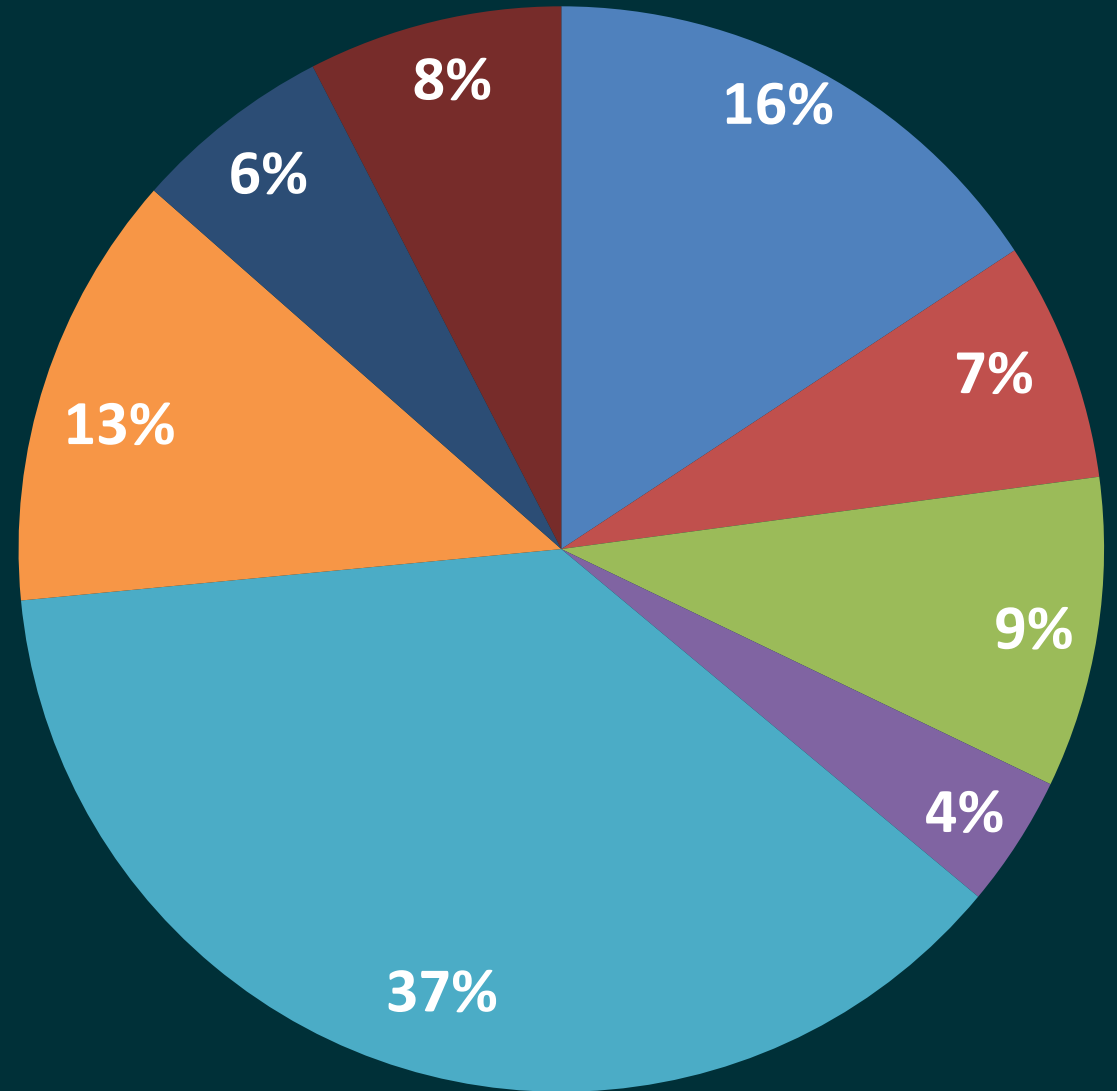
Impacts of growth (air quality, traffic, loss of open space, etc.) are contributing to a lower quality of life and threaten the things that Utah Valley residents value most: a safe and secure environment, low cost of living and economic opportunity, and scenic beauty and outdoor recreation.

# Summary

- Utah Valley residents and visitors feel the highest priorities should be **managing water, improving transportation, reducing air pollution, and improving education**
- Safe and neighborly communities, economic opportunity, and nature contribute most positively to their quality of life.
- Traffic, poor air quality, and crowding contribute most negatively to quality of life.

# Where do you live?

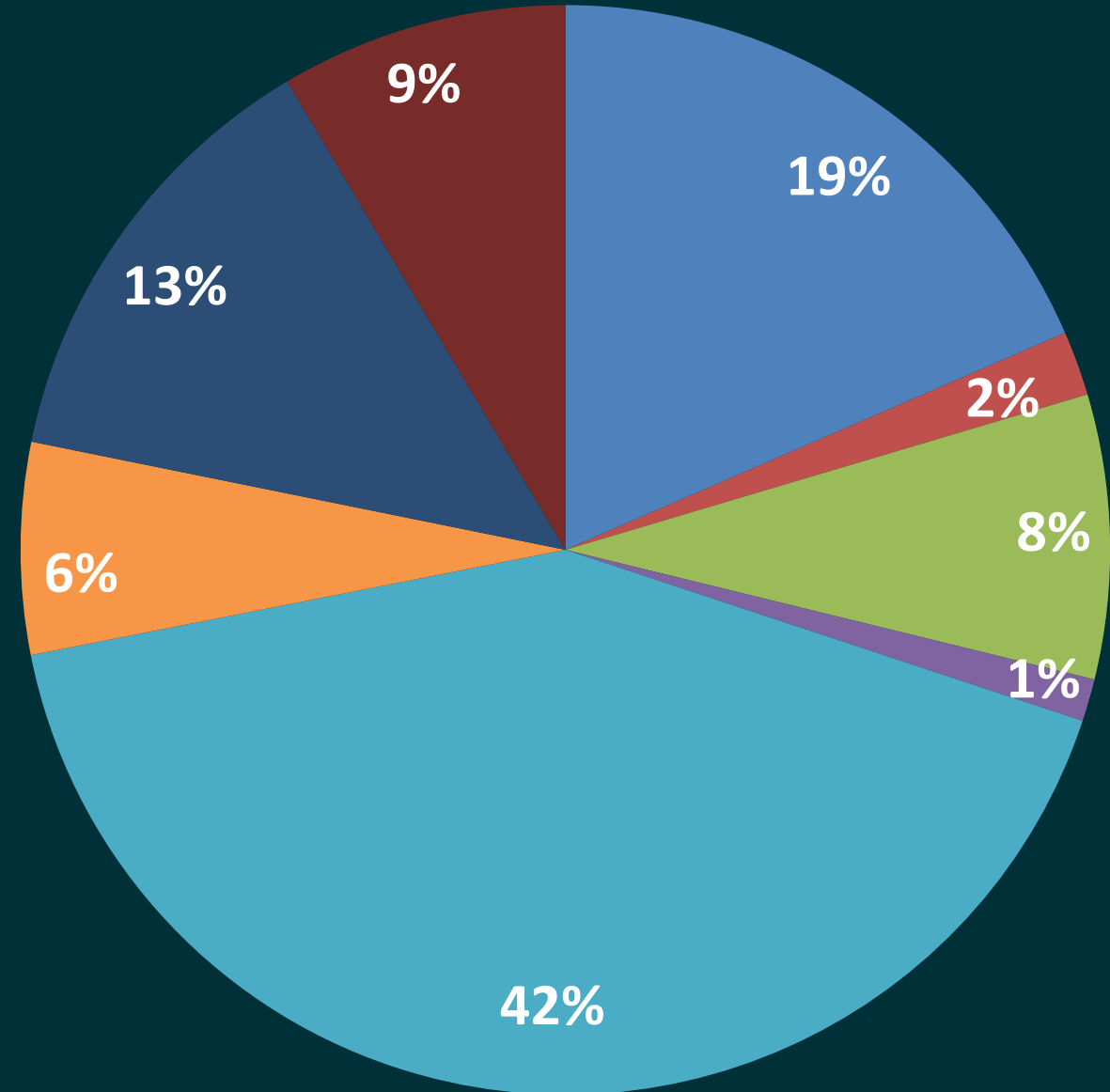
- Lehi/Saratoga Springs
- Eagle Mountain/Cedar Valley
- Pleasant Grove/Lindon/American Fork
- Highland/Alpine/Cedar Hills
- Orem/Provo/Vineyard
- Spanish Fork/Springville/Mapleton/Santaquin
- Salt Lake County
- Other



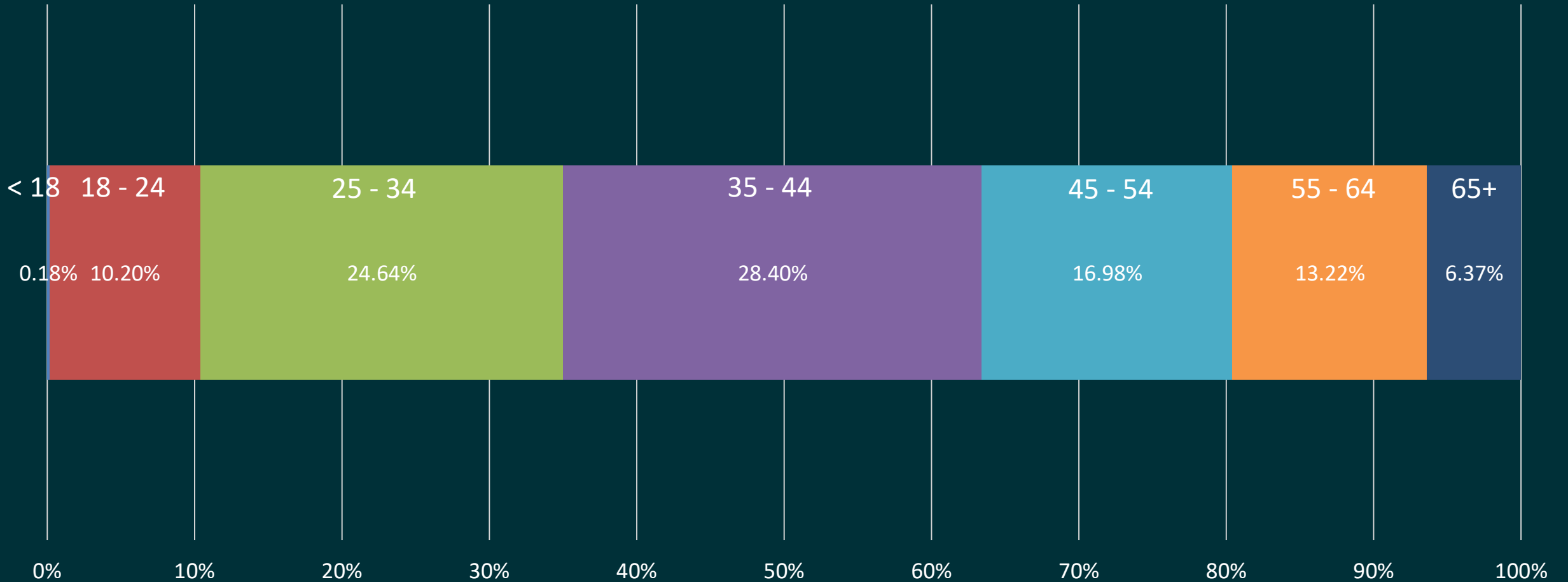


# Where do you work?

- Lehi/Saratoga Springs
- Eagle Mountain/Cedar Valley
- Pleasant Grove/Lindon/American Fork
- Highland/Alpine/Cedar Hills
- Orem/Provo/Vineyard
- Spanish Fork/Springville/Mapleton/Santaquin
- Salt Lake County
- Other

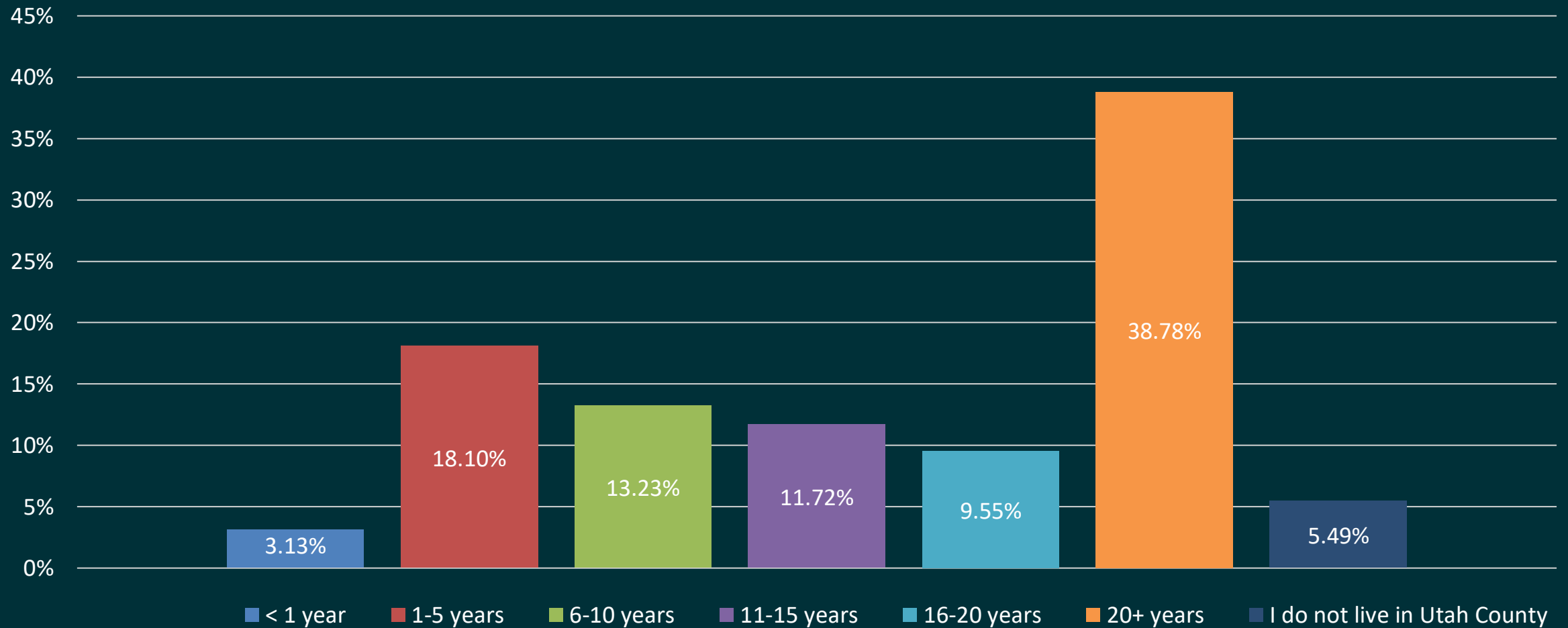


# What is your age?



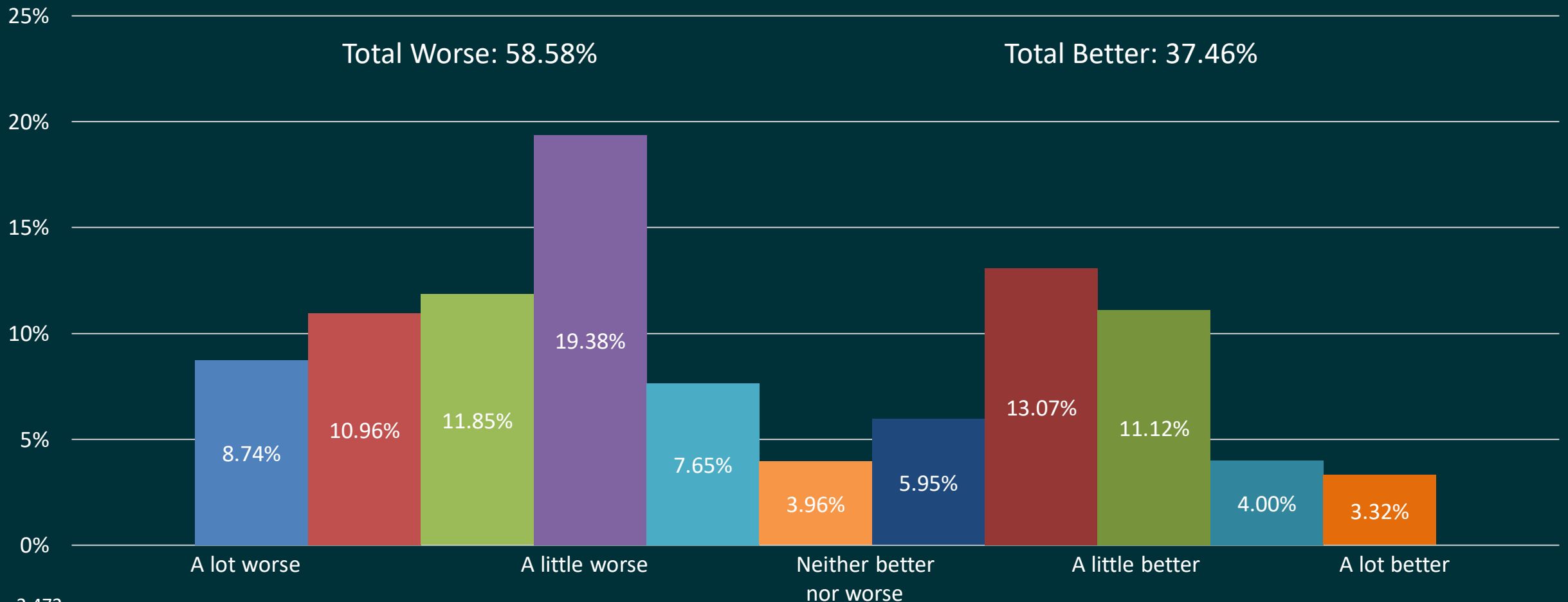
N = 2,715  
Results from online survey.

# How long have you lived in Utah County?



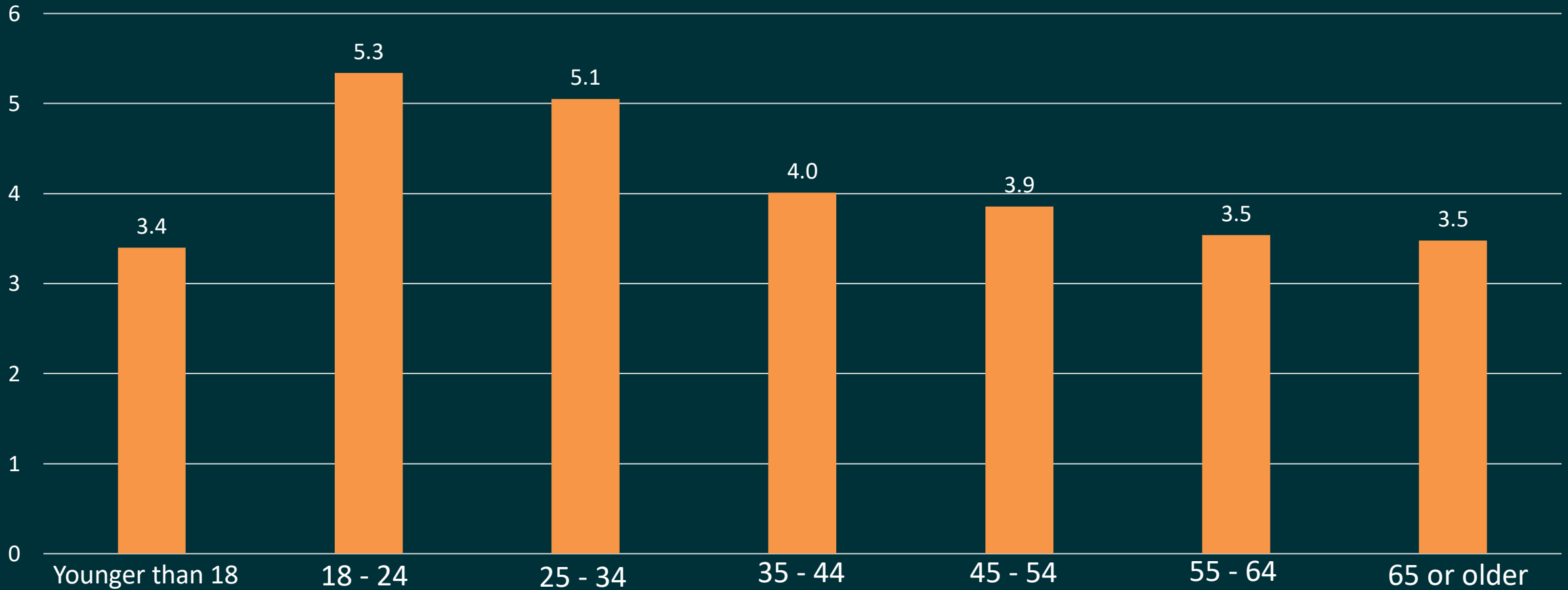


# Do you believe growth in Utah County will make things better or worse?

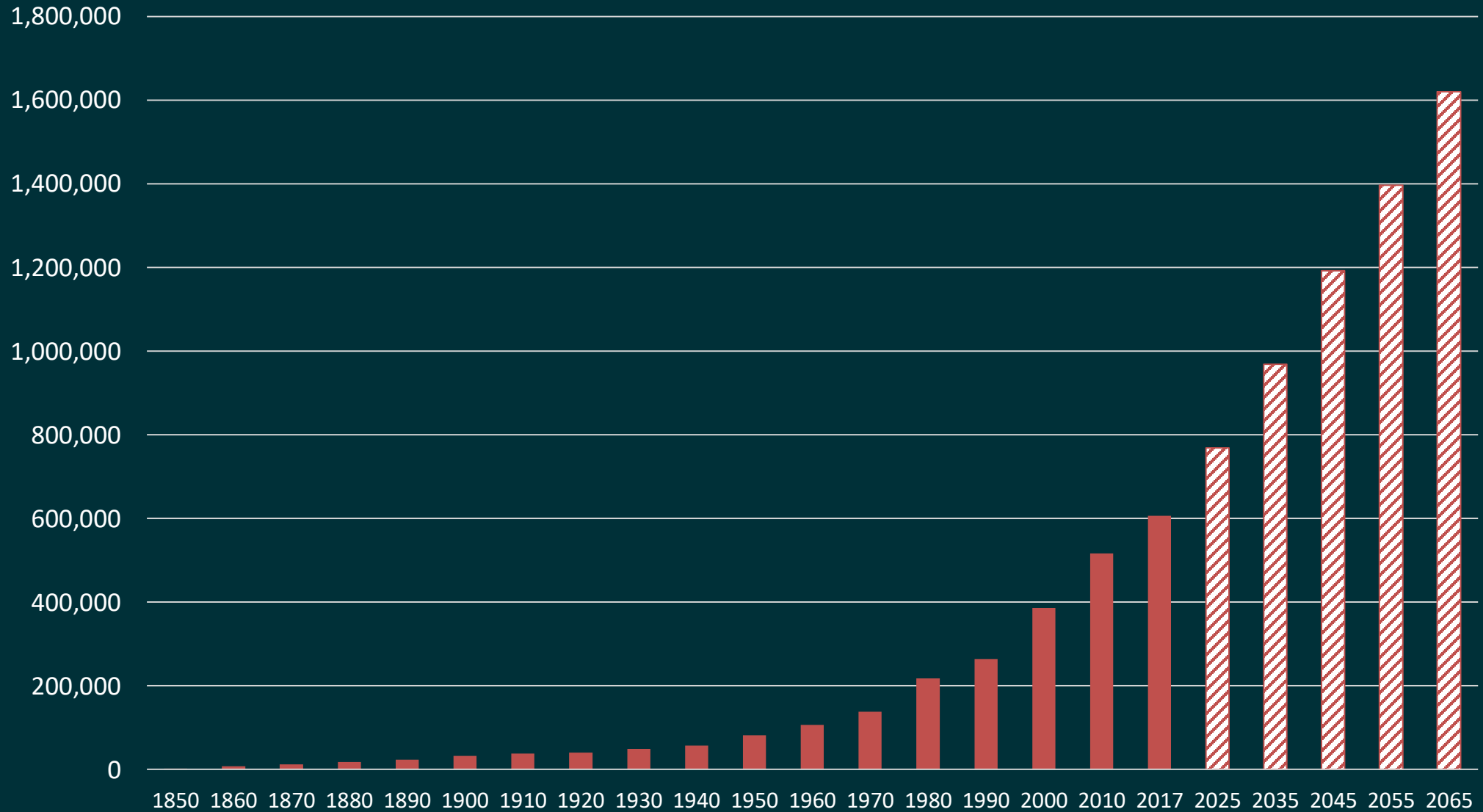


# Do you believe growth in Utah County will make things better or worse? (Average)

Participants ranked from 0 (a lot worse) to 10 (a lot better)



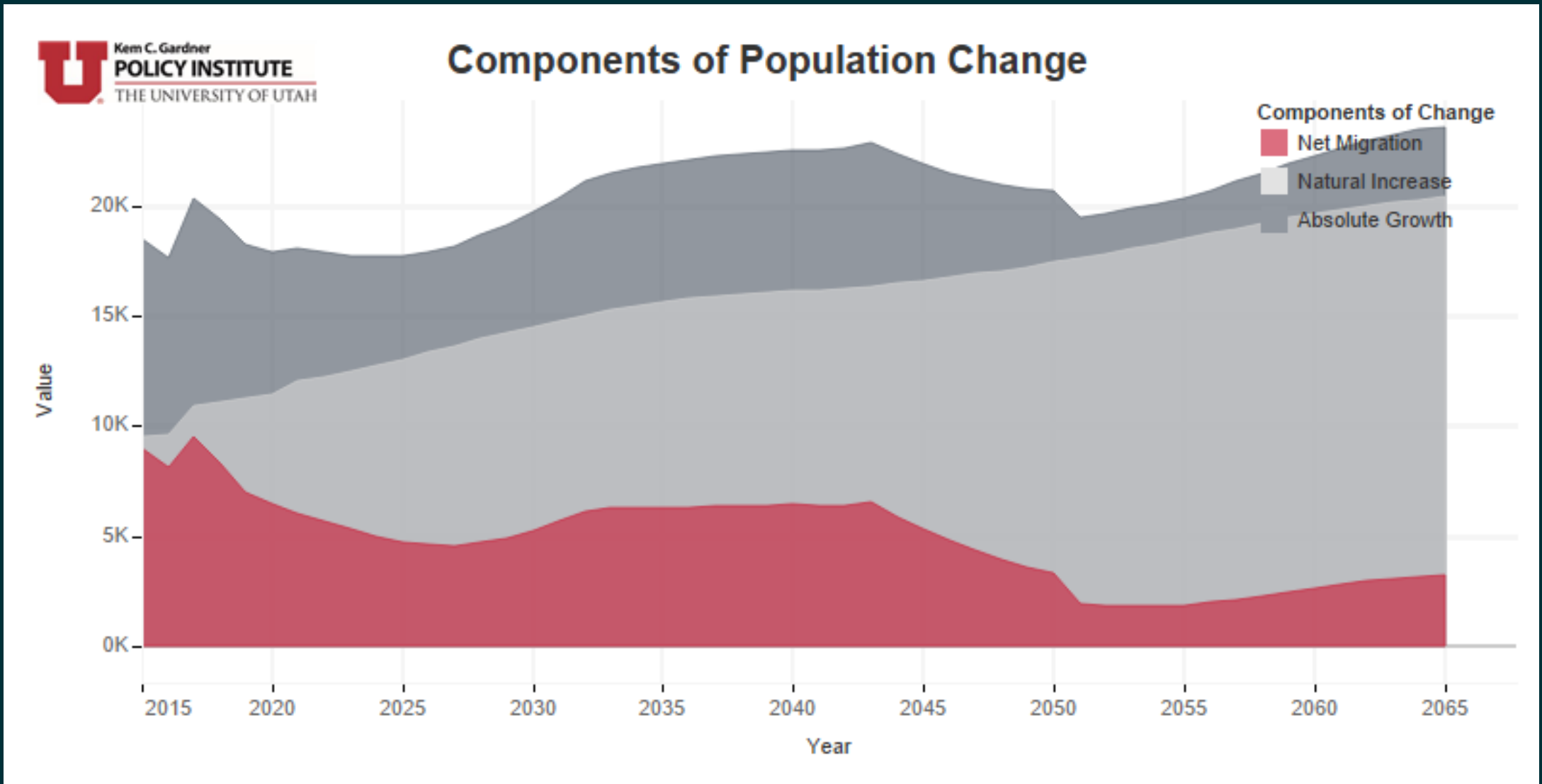
# UTAH COUNTY POPULATION GROWTH



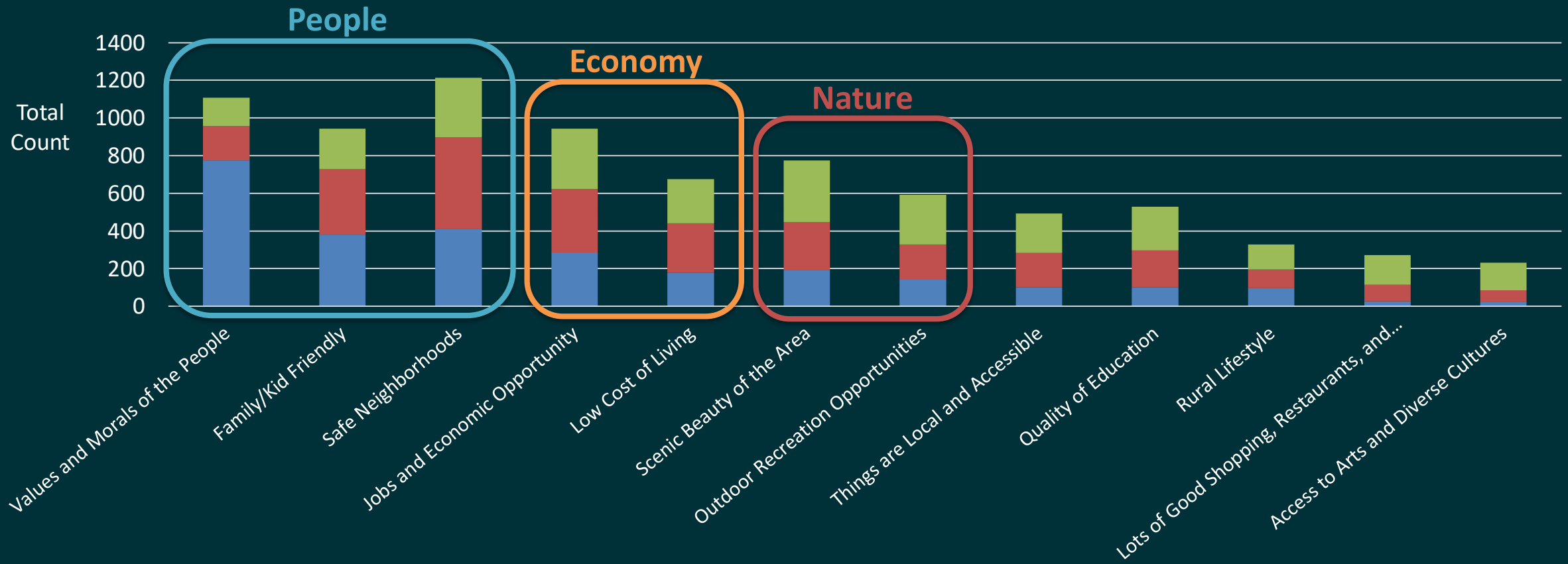
Source: U.S. Census; Kem C. Gardner Policy Institute



# About 85% of our 2050 Growth is Internal



Thinking about the quality of life in Utah County, please identify which of the following factors have the greatest POSITIVE impact on the overall quality of life for you personally.



# UTAHNS' VALUES

## SAFE AND SECURE ENVIRONMENT





# UTAHNS' VALUES

## COST OF LIVING AND ECONOMIC OPPORTUNITY

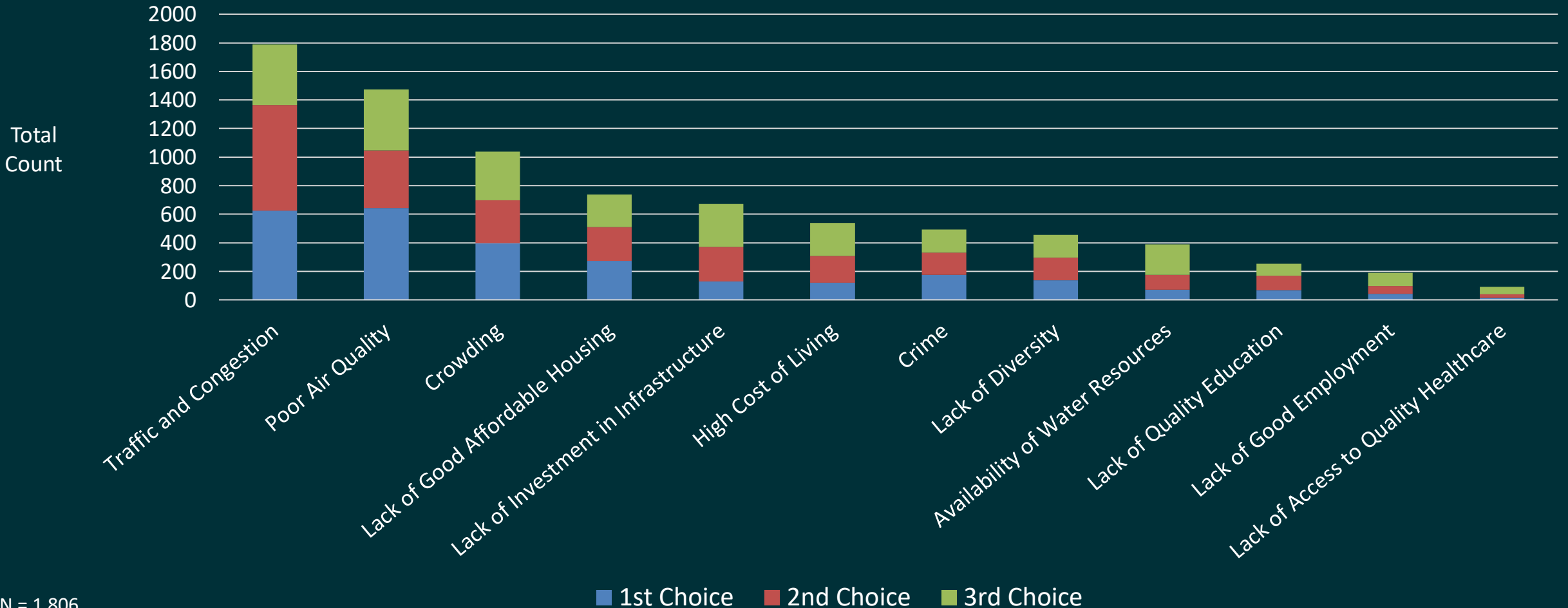


# UTAHNS' VALUES

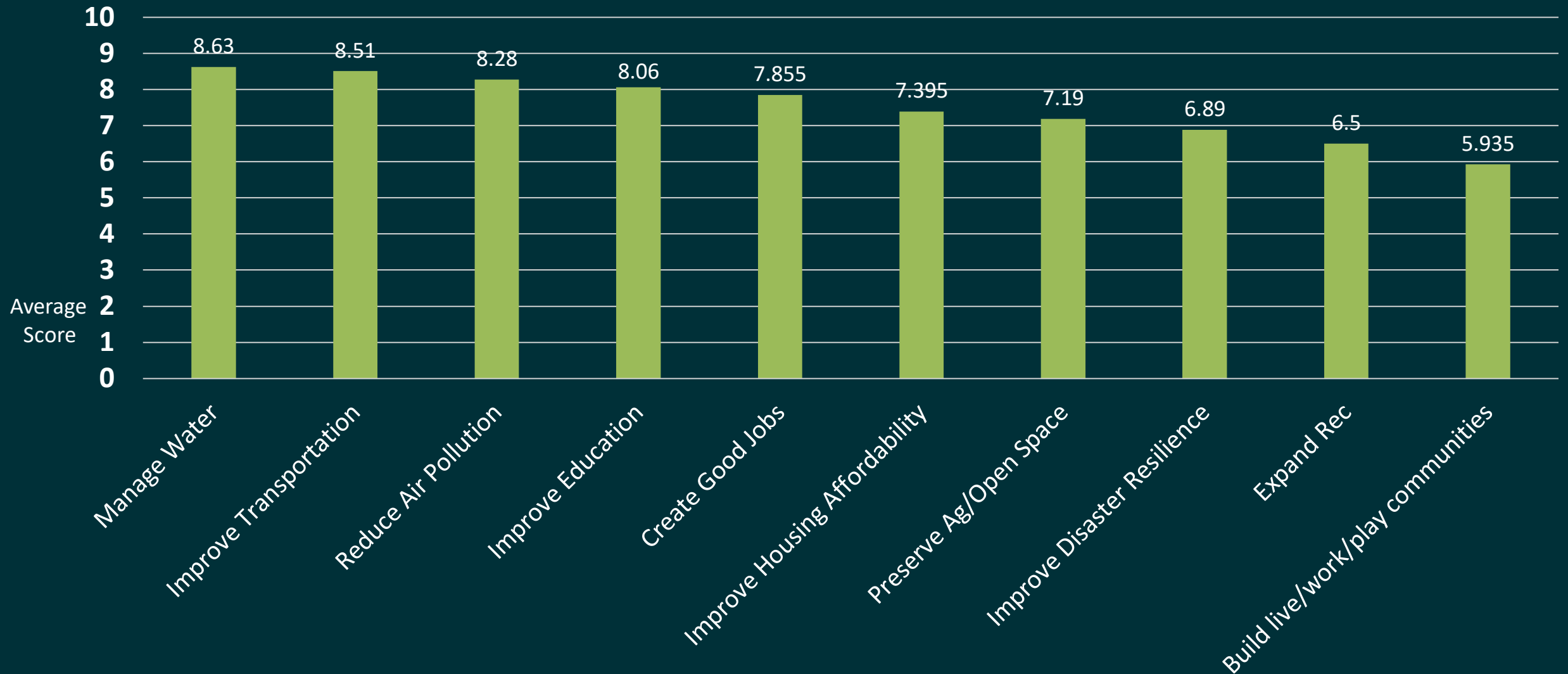
## SCENIC BEAUTY AND OUTDOOR RECREATION



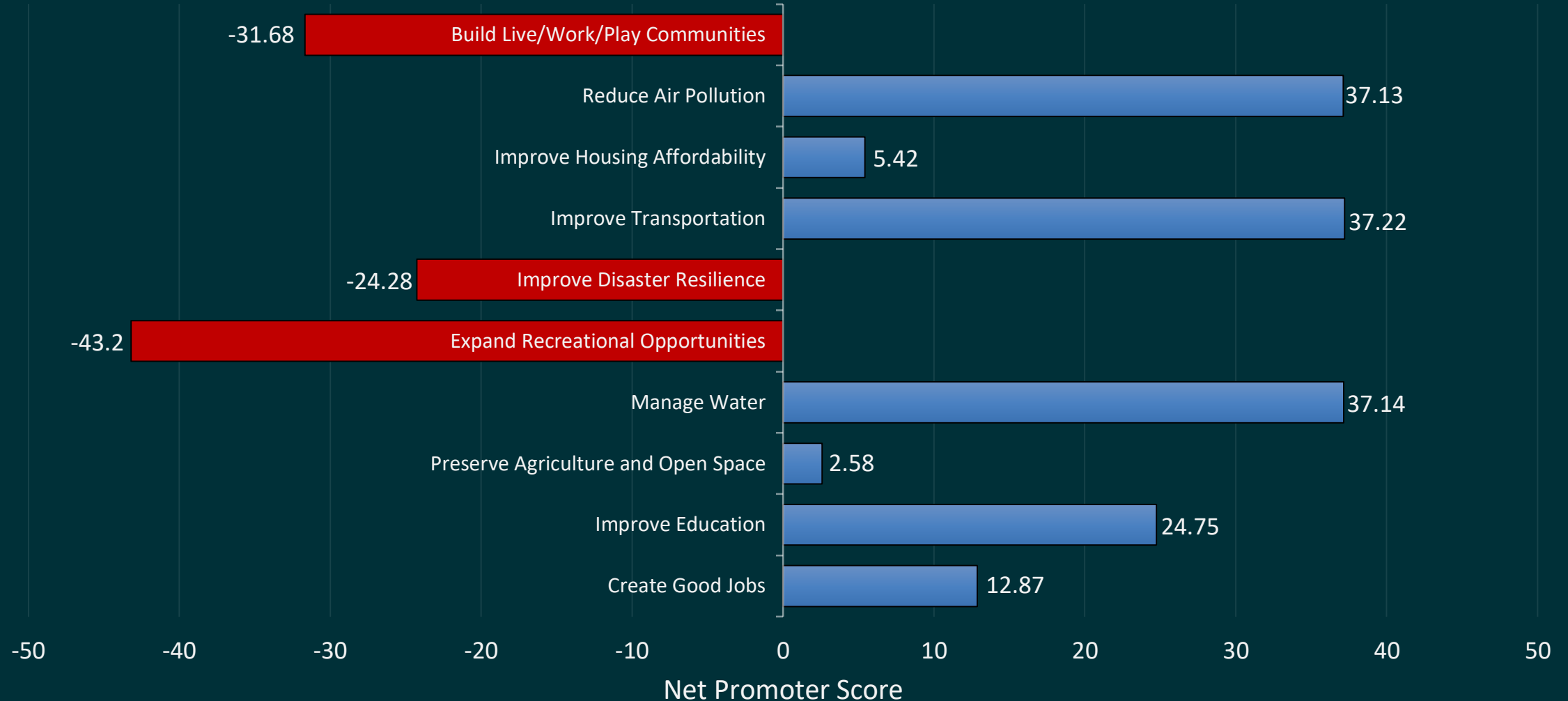
Thinking about the quality of life in Utah County, please identify which of the following factors have the greatest NEGATIVE impact on the overall quality of life for you personally.



Utah County is projected to double in population by 2050. The vast majority of that growth will be from new births. In light of growth, **how important to prioritize are the following outcomes for Utah County's future** (on a scale from 1 to 10)?

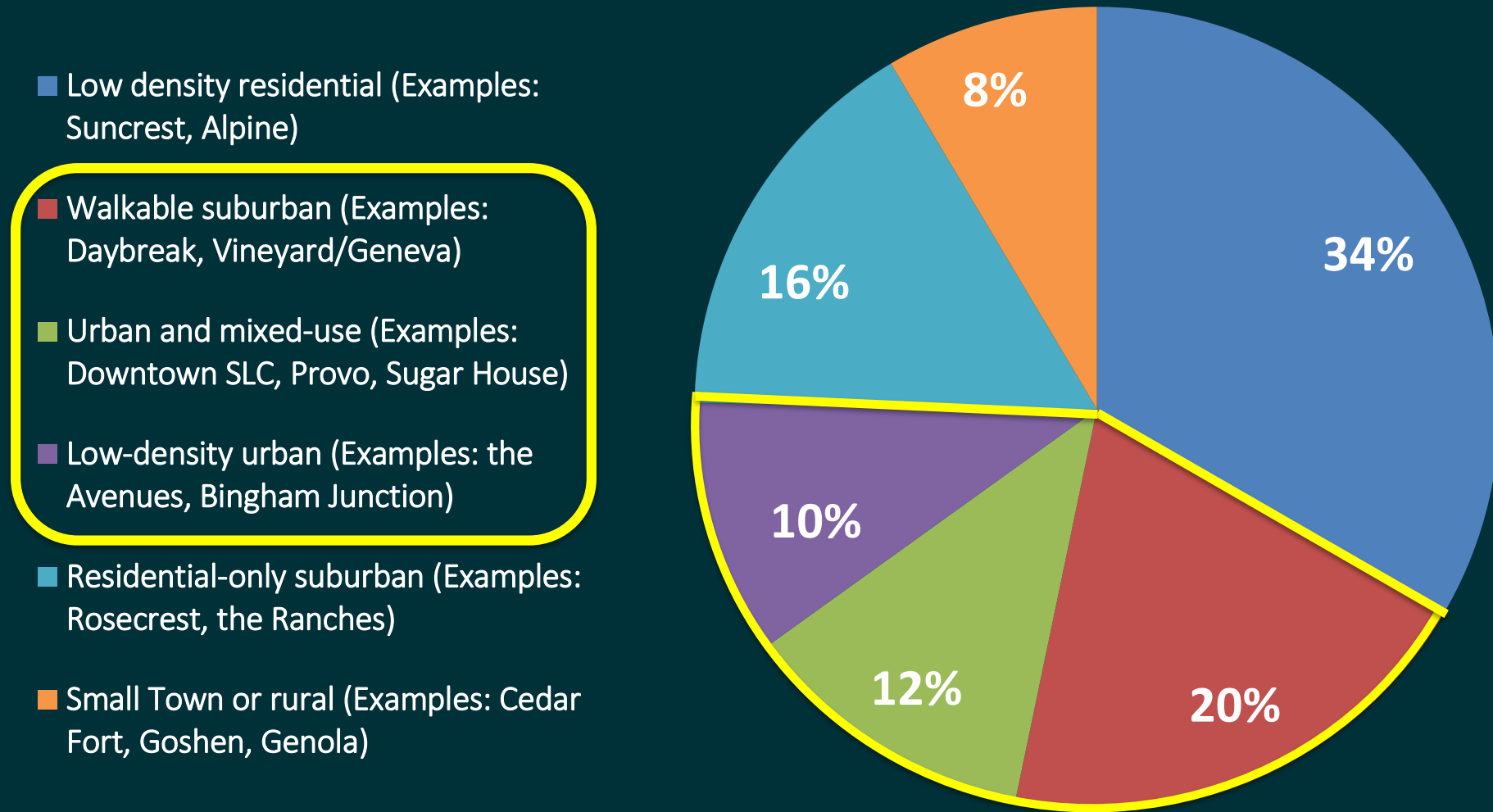


Utah County is projected to double in population by 2050. The vast majority of that growth will be from new births. In light of growth, **how important to prioritize are the following outcomes for Utah County's future** (on a scale from 1 to 10)?



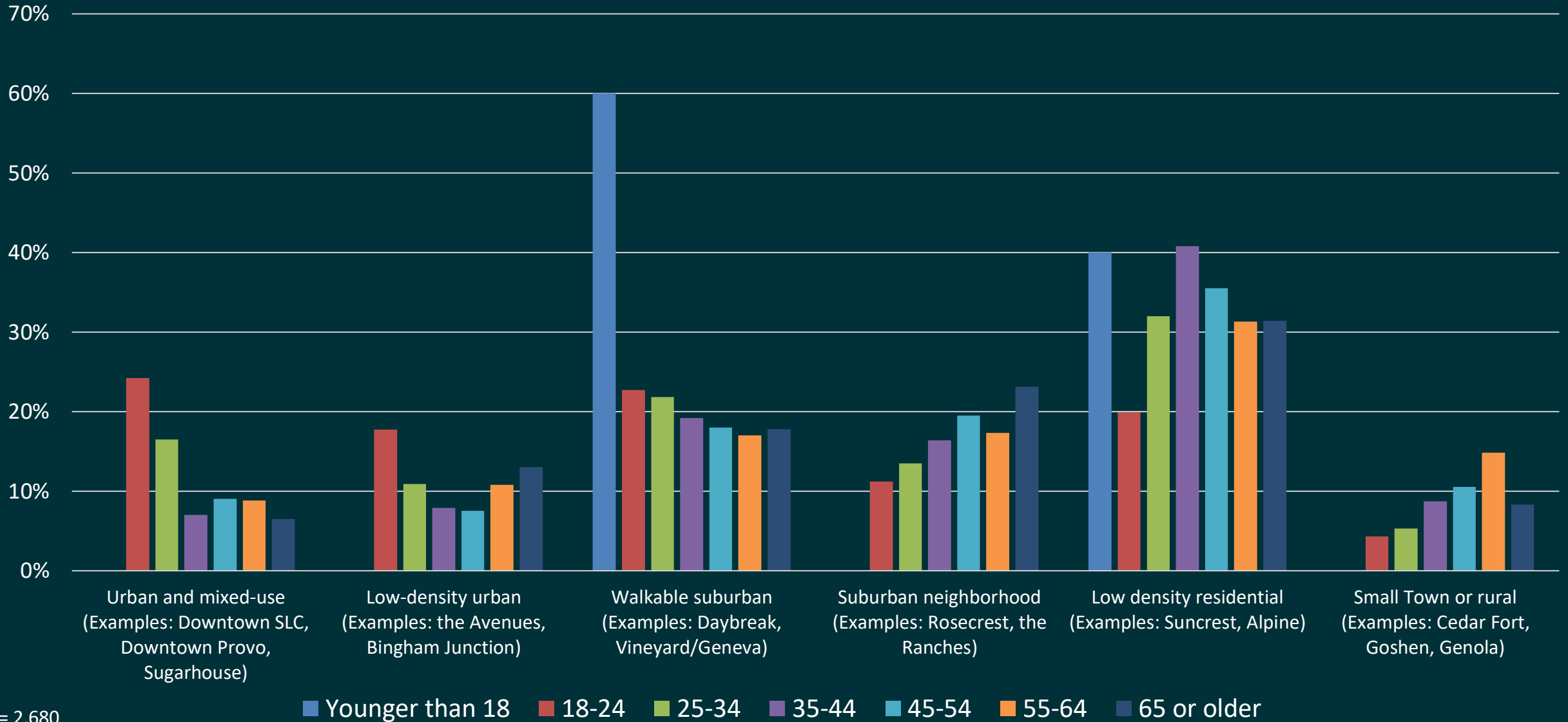


# From the following options, what would your ideal community be to live in?



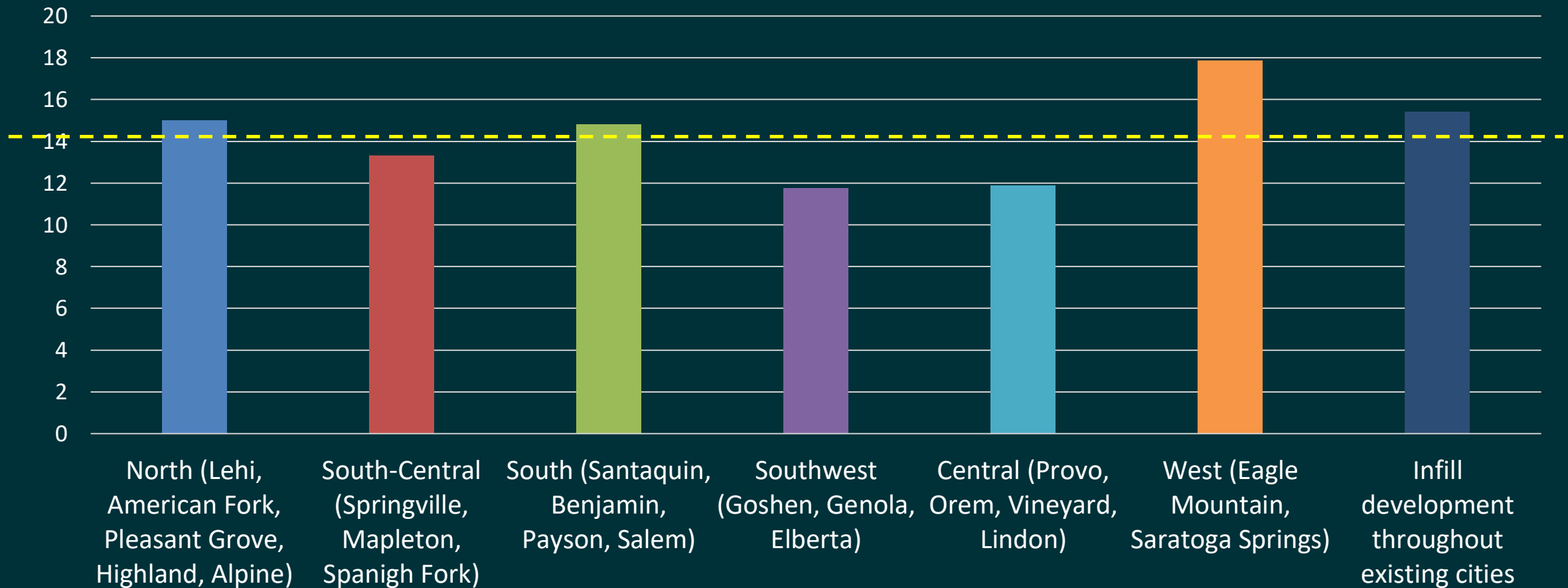
About 42% of respondents say they want to live somewhere more walkable than traditional suburban.

# Ideal Housing By Age Group



N = 2,680  
Results from online survey.

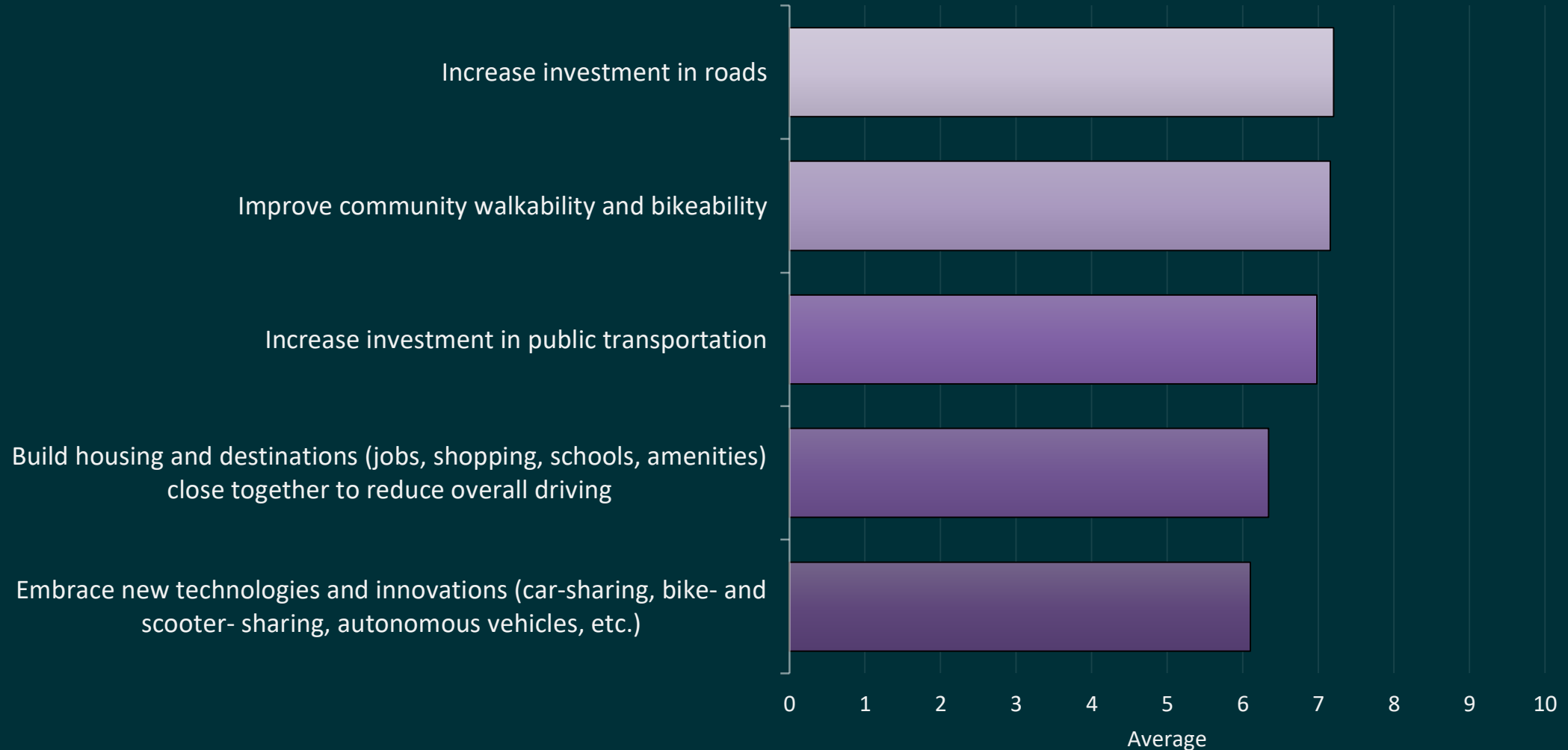
# What percentage of growth should occur in each sector of Utah County?



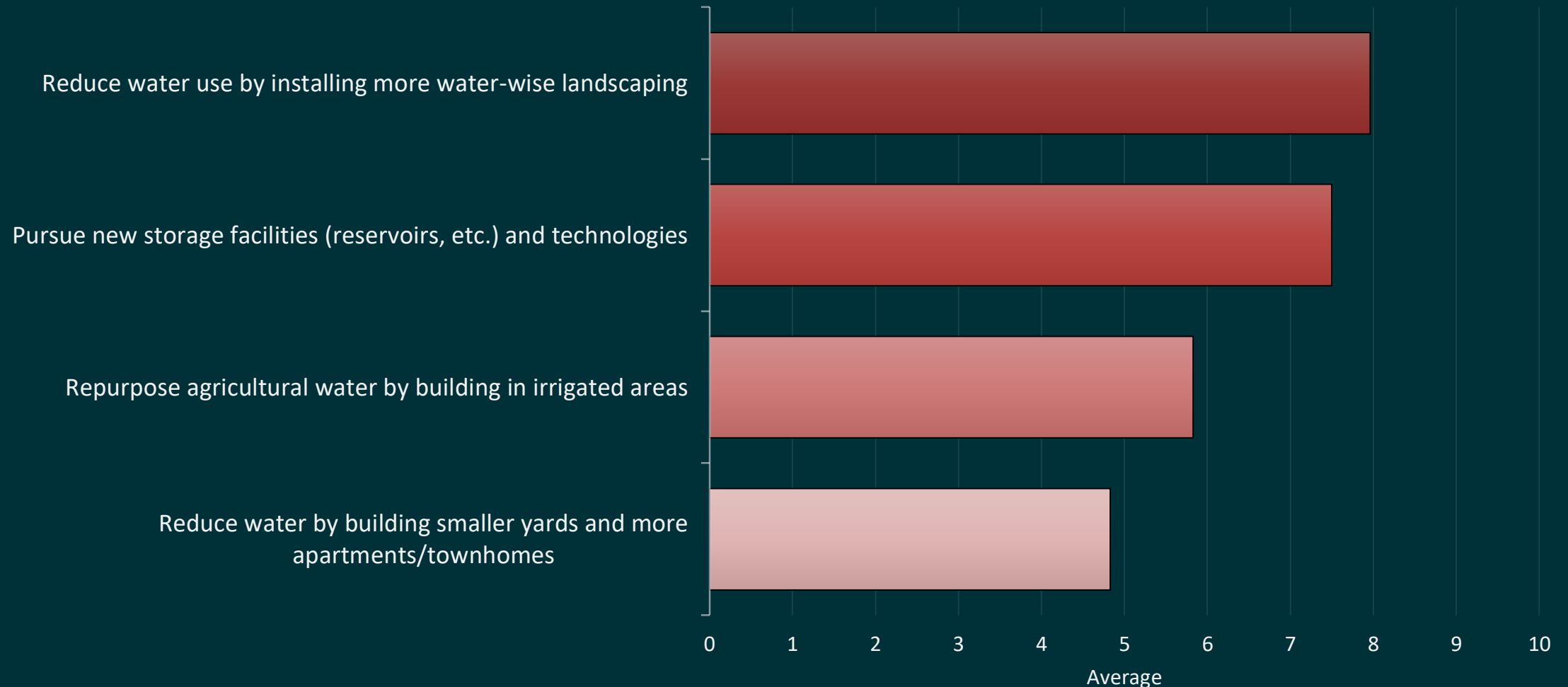
# How much should we invest in each transportation type?



# How much emphasis should be put on each of the following strategies for managing transportation and mobility?

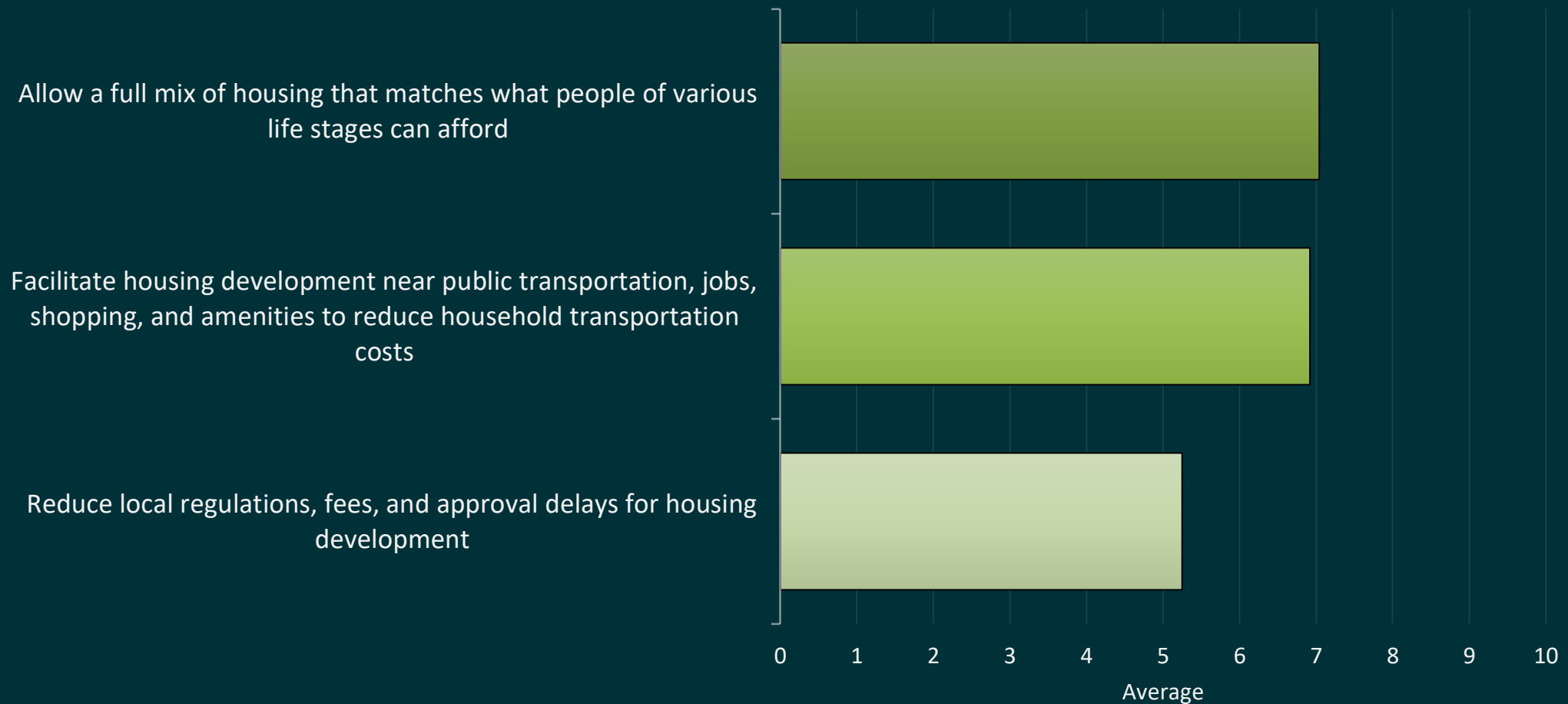


# Please rate strategies for securing water for additional population?

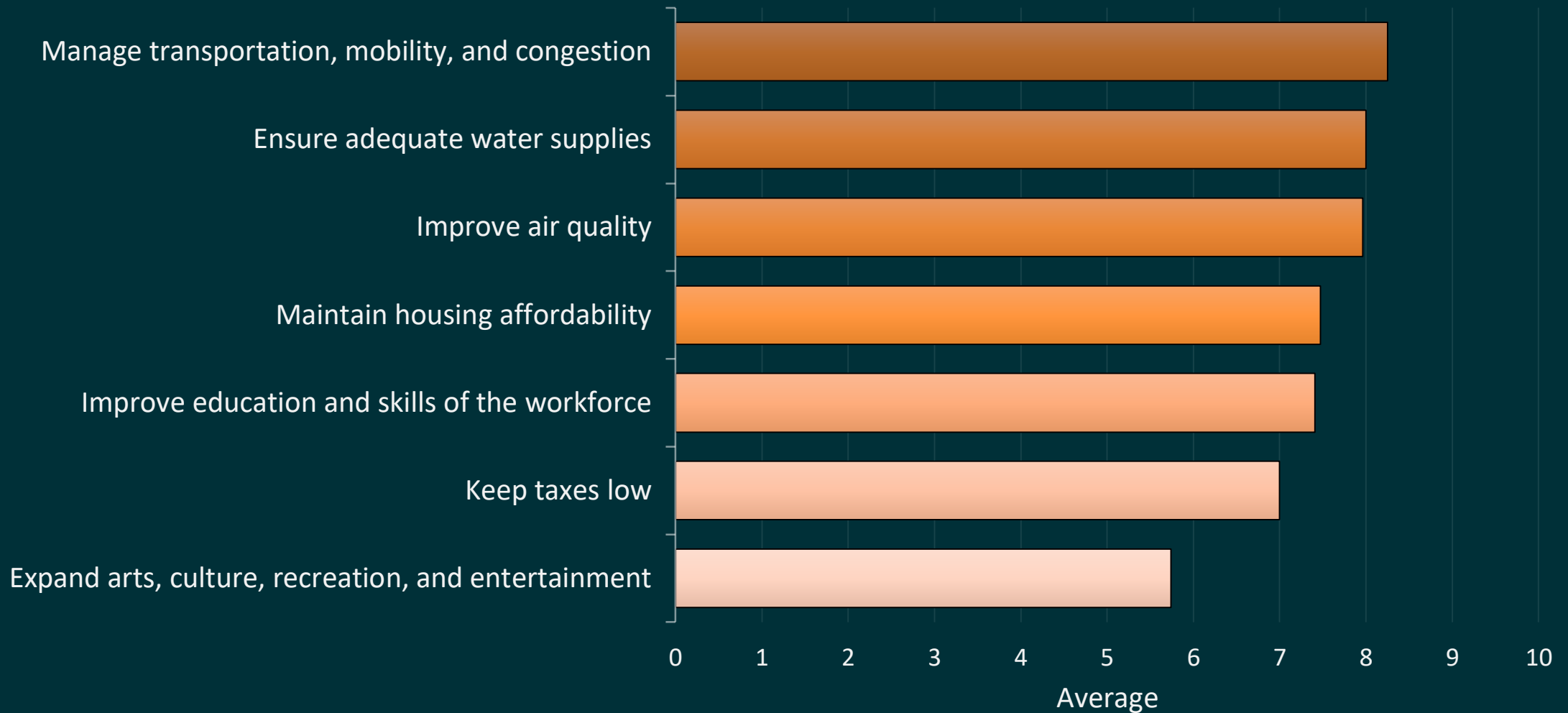




# Please rate strategies for maintaining affordability



# Please rate strategies for growing and attracting good jobs





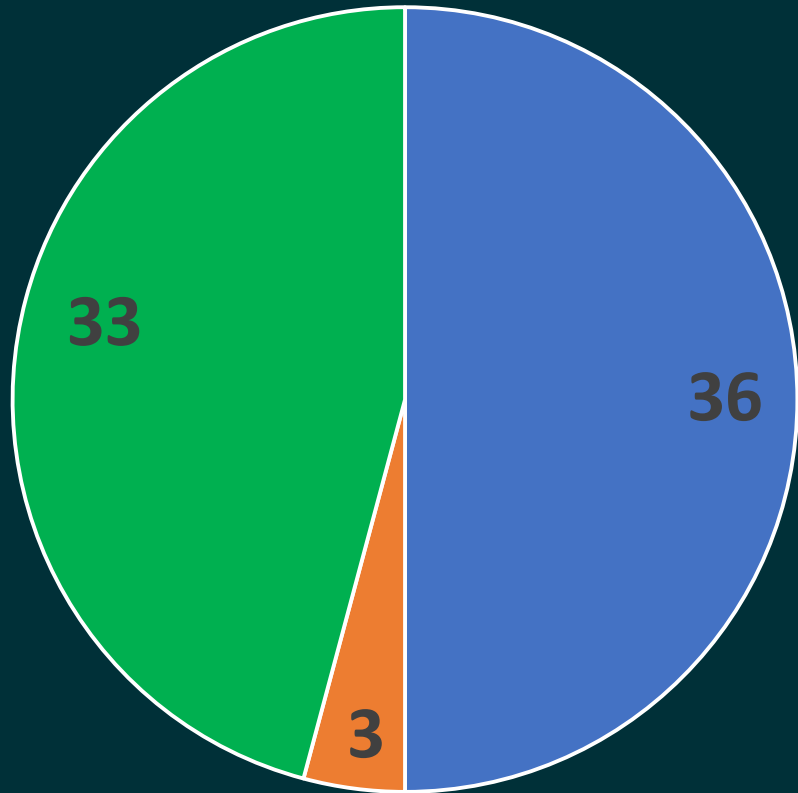


# Mapping Exercise Results



# Mapping Exercise Chipsets

At the workshops, each table was asked to select one of three envelopes representing different growth patterns and place the set on their map.



**36 tables chose Centers**

(Concentrated pockets of jobs and housing)

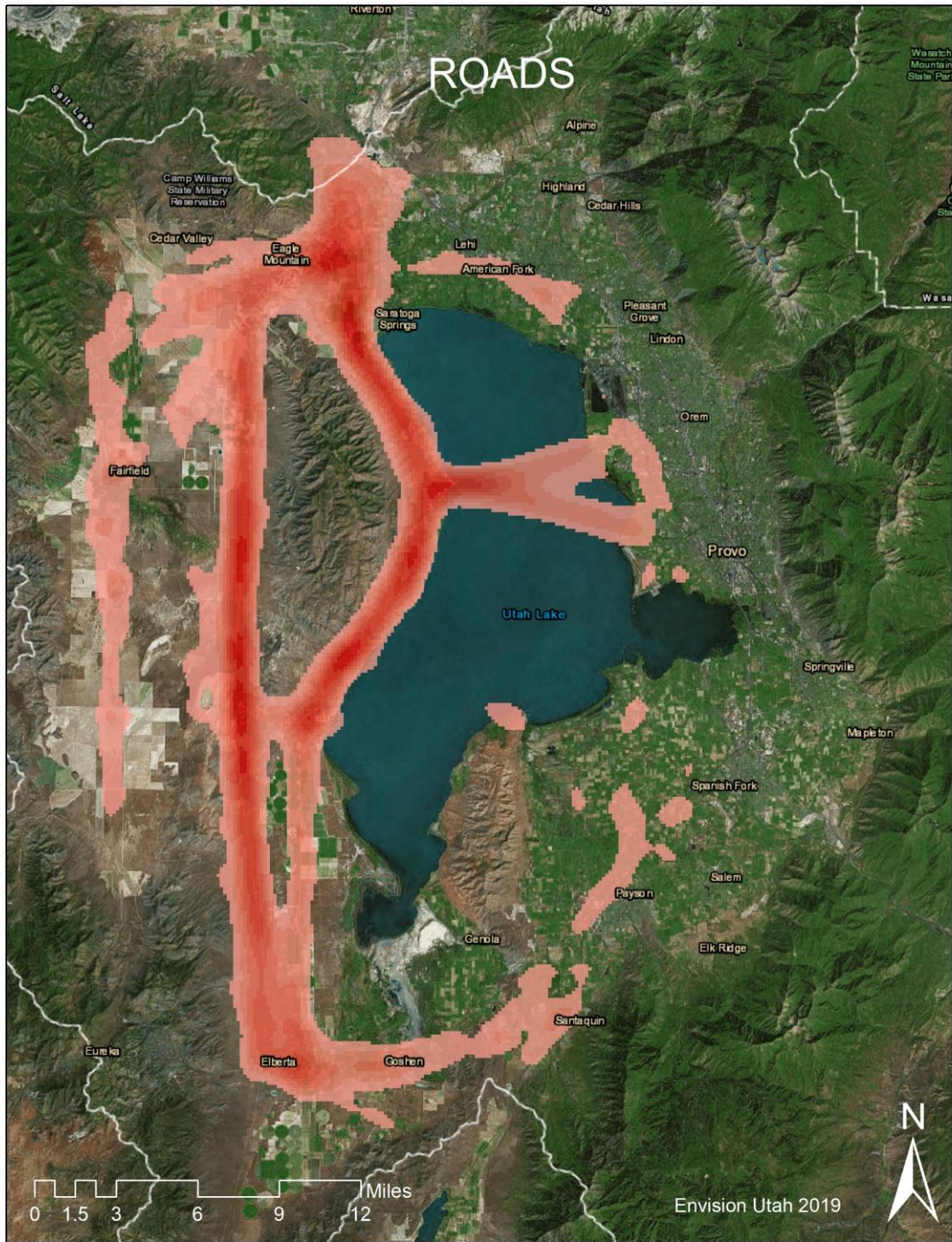
**33 tables chose Market**

(growth according to jobs and housing projections)

**3 tables chose Current**

(growth according to current trends and conditions)



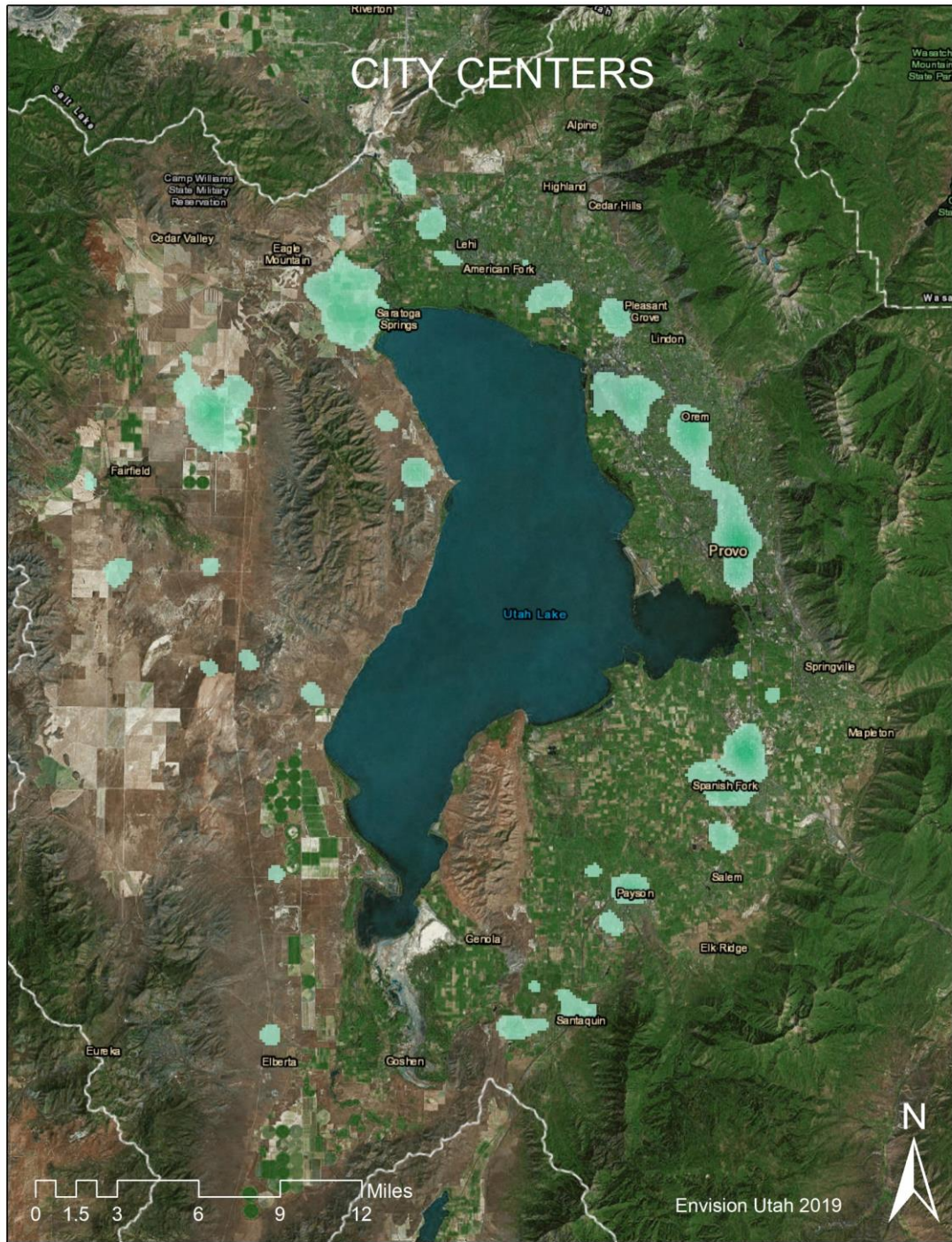




# METRO CENTERS

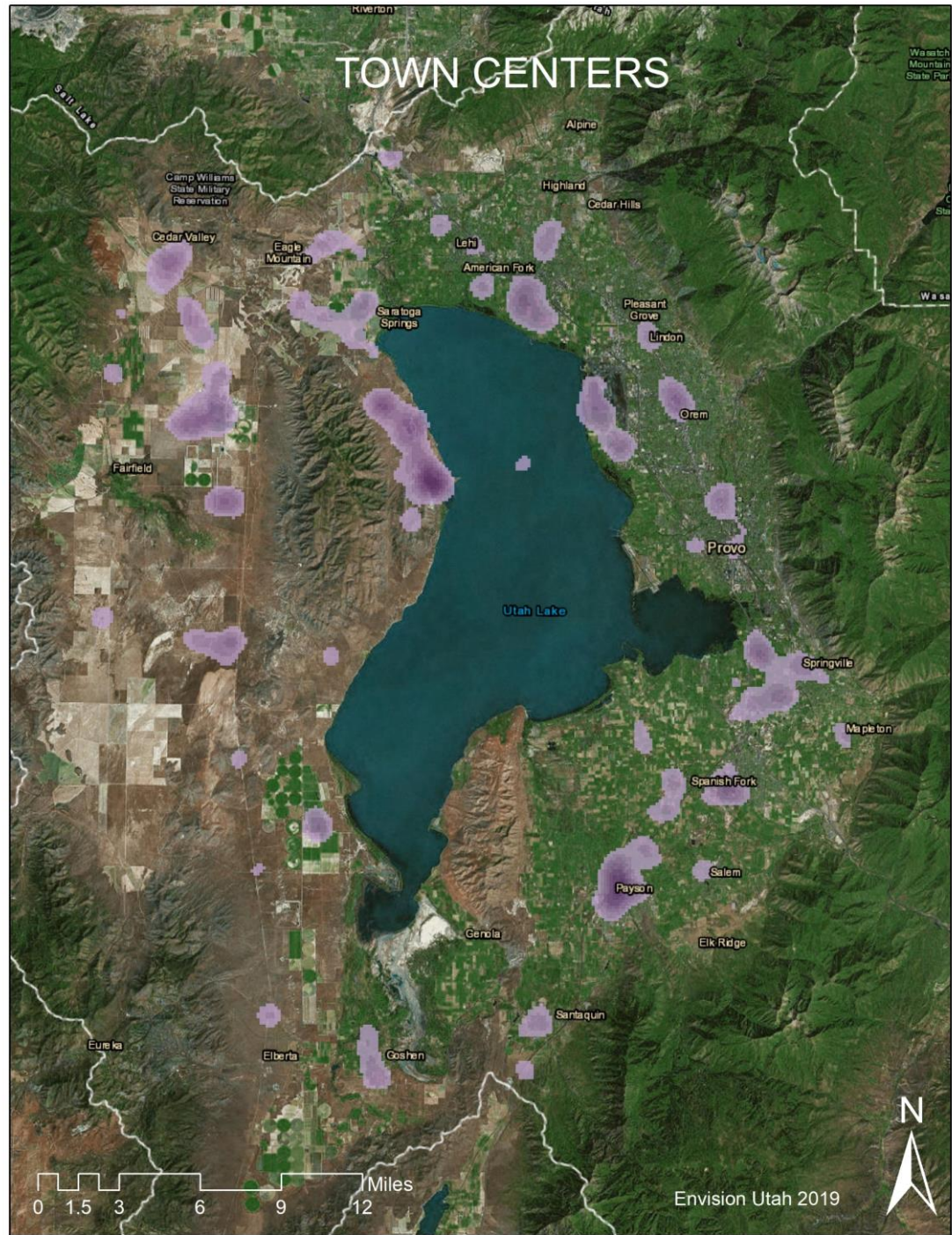


# CITY CENTERS





# TOWN CENTERS

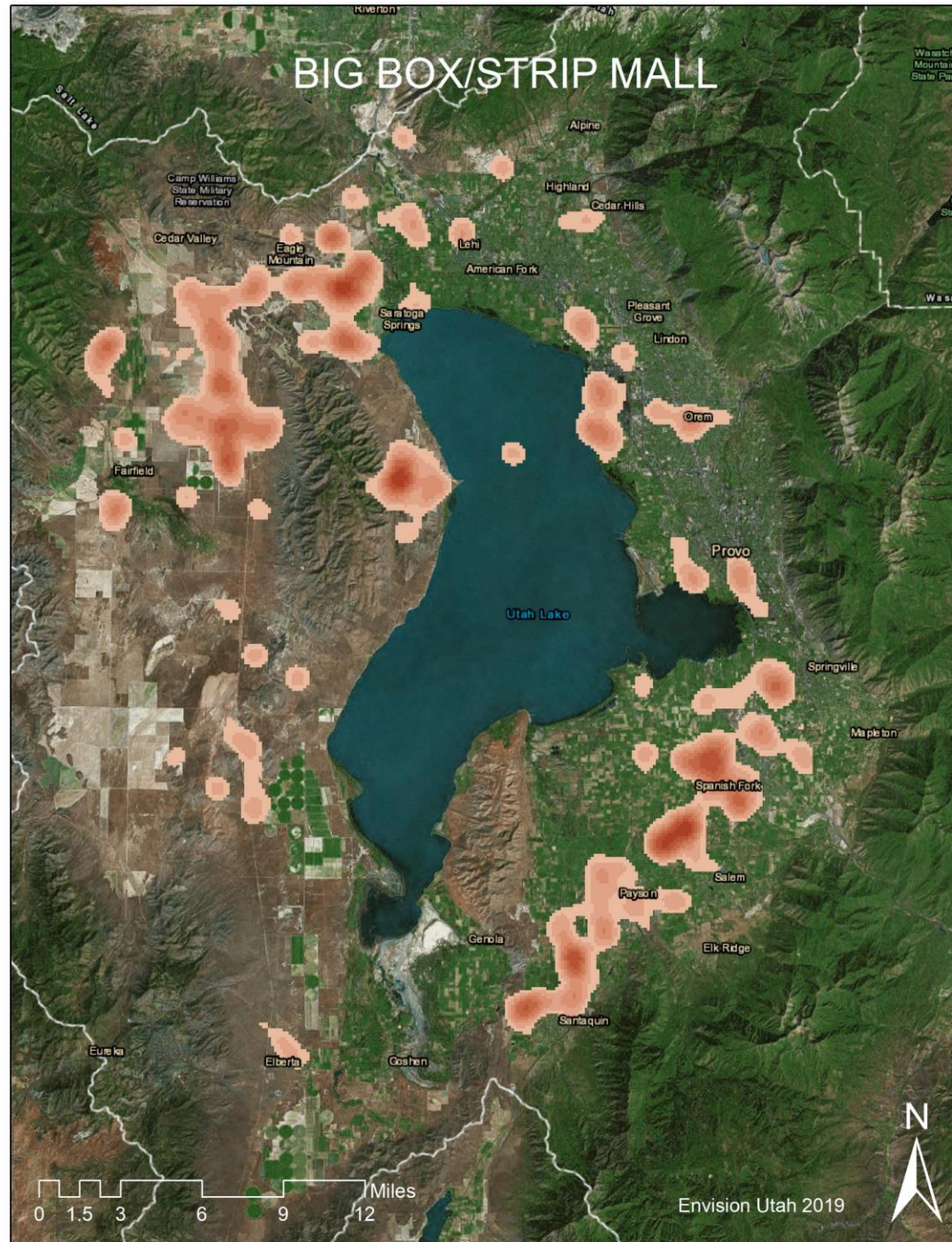




# SUBURBAN JOB CENTERS



# BIG BOX/STRIP MALL



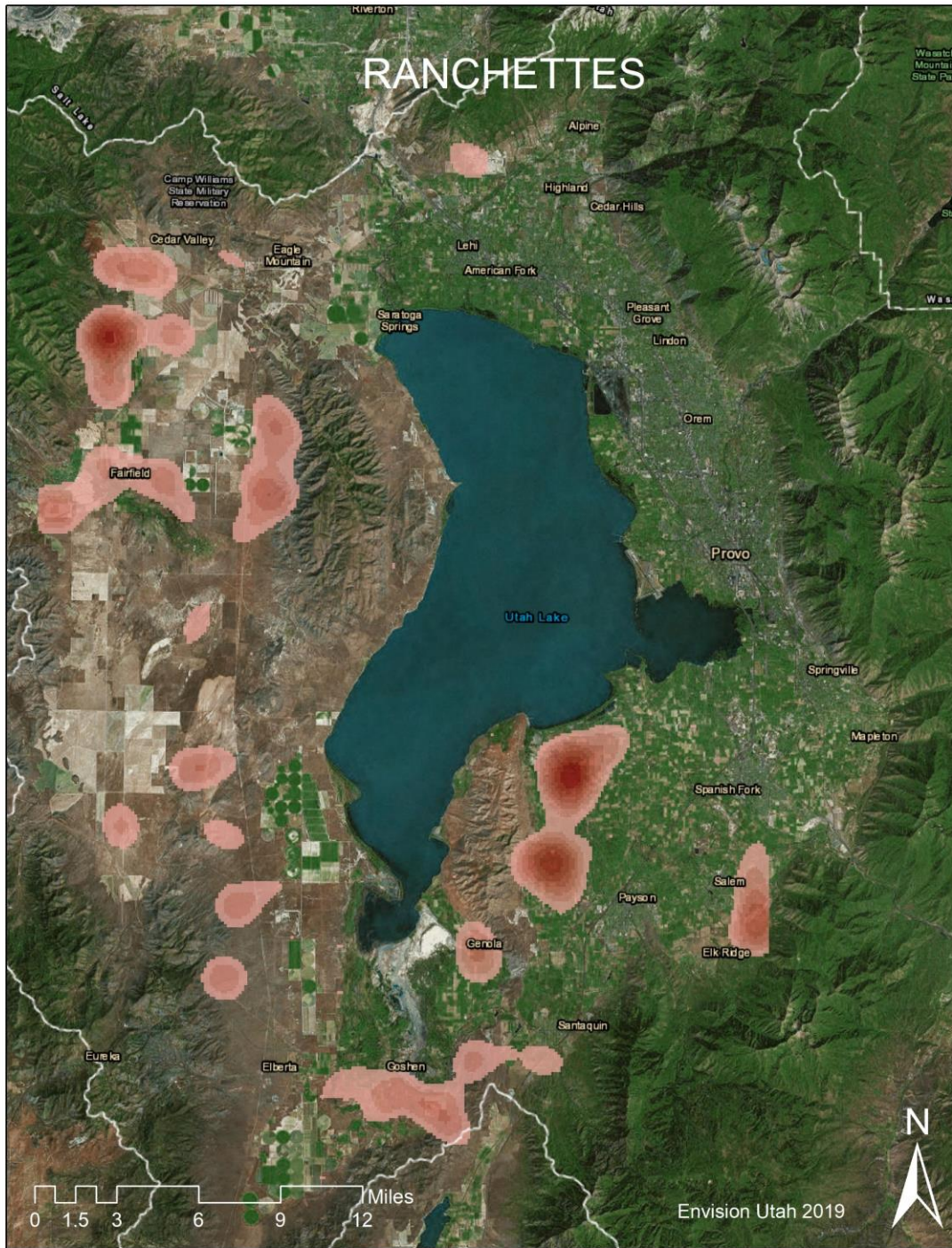


# INDUSTRIAL CENTERS





# RANCHETTES

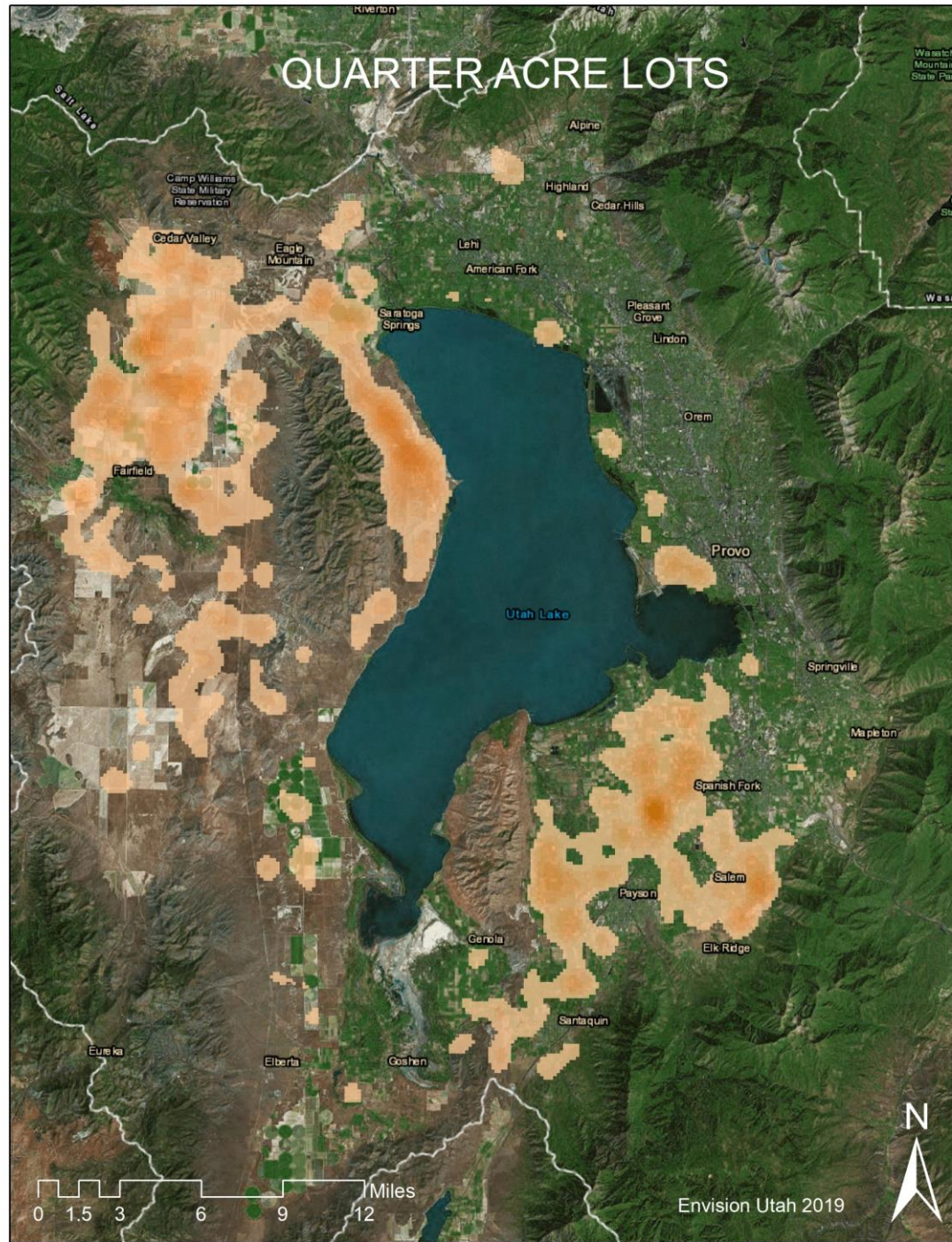


# ONE ACRE LOTS



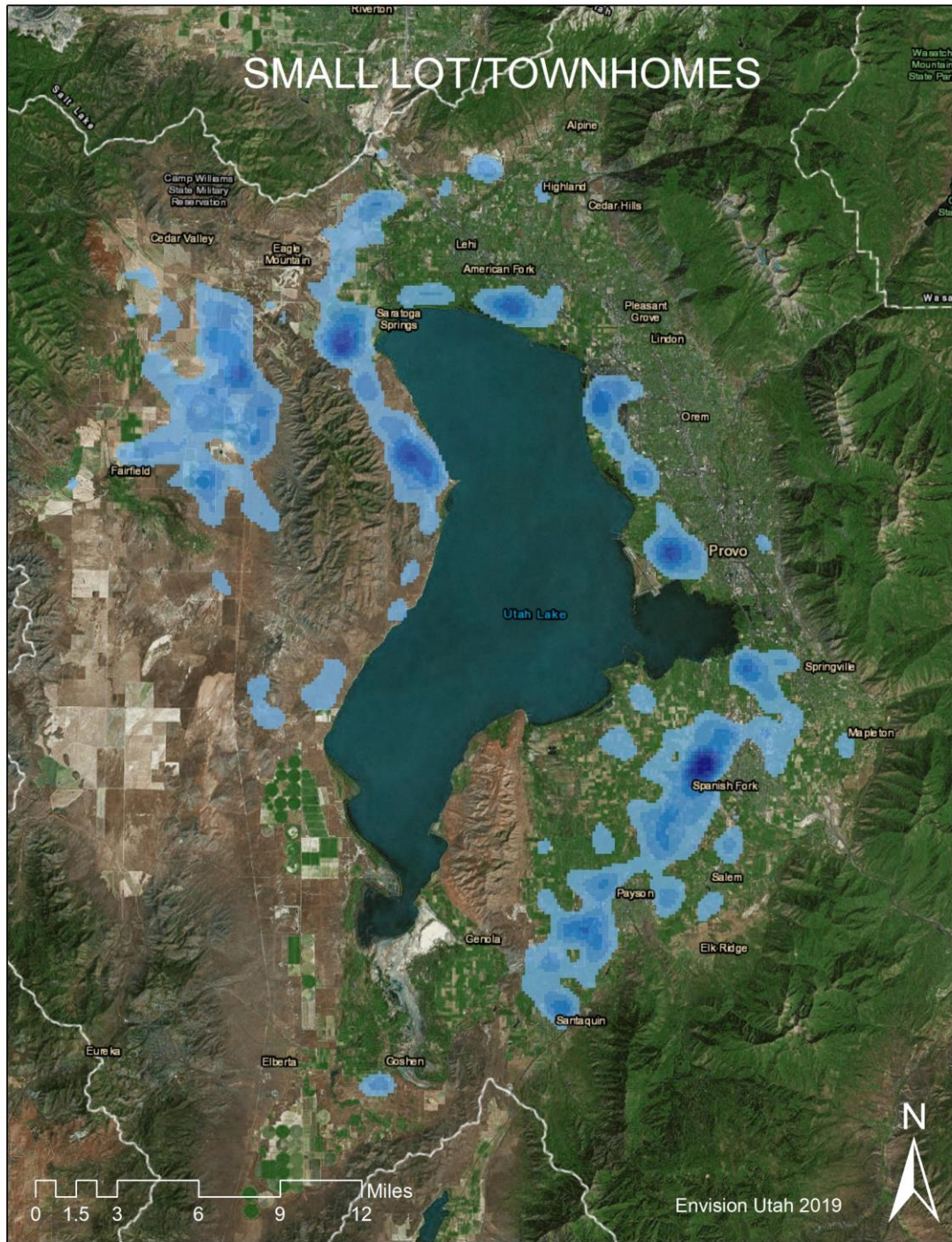


# QUARTER ACRE LOTS





# SMALL LOT/TOWNHOMES



# APARTMENTS

